

ZB-1701 GC Columns

- **Temperature Limits: -20 to 280/300 °C (Isothermal/TPGC)***
- **Fast run and re-equilibration times for enhanced sample throughput and productivity**
- **Provides alternate selectivity to phenyl phases with similar polarity**
- **Equivalent to USP Phase G46**

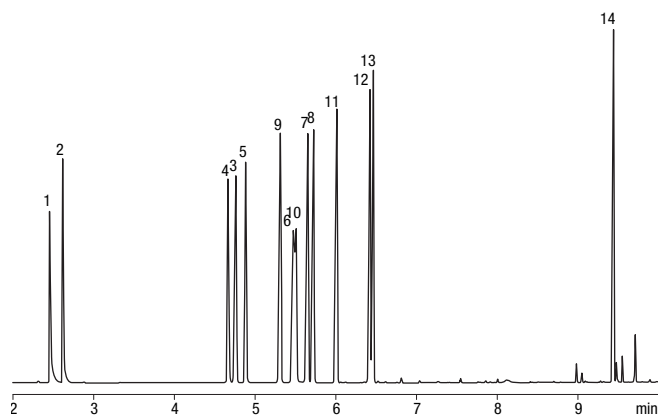
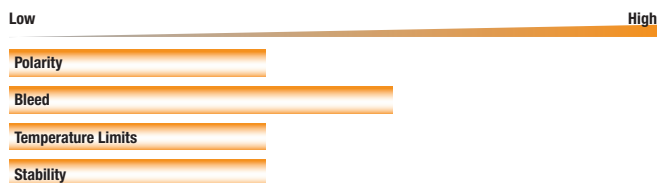
Applications

Alcohols	Tranquilizers	PCBs	Steroids	Amines
Phenols	Esters	PAHs	TMS Sugars	Drugs
Pharmaceutical intermediates	Aromatic Hydrocarbons		Solvents	

Alternative to Any 14 %-Cyanopropylphenyl-86 %-Dimethylpolysiloxane Phase:

DB-1701	SPB-1701	Rtx-VMS	007-1701	BP10	AT-1701	Equity 1701
Rtx-1701	OV-1701	CP-Sil 19 CB				

Column Profile



App ID 14789

Aromatic Amines

- Column:** Zebtron ZB-1701
- Dimensions:** 30 meter x 0.25 mm x 0.25 µm
- Part No.:** 7HG-G006-11
- Injection:** Split 15:1 @ 220 °C, 1 µL
- Carrier Gas:** Helium @ 1 mL/min (constant flow)
- Oven Program:** 60 °C for 1 min to 110 °C @ 30 °C/min to 135 °C/min at 9 °C/min to 260 °C at 30 °C/min for 2 min
- Detector:** MSD @ 180 °C
- Sample:** Analytes are at 1.58 mg/mL each
- | | |
|-----------------------|-------------------------|
| 1. Piperidine | 8. o-Toluidine |
| 2. 2-Methylpiperidine | 9. N,N-Dimethylaniline |
| 3. Aniline | 10. β-Phenylethylamine |
| 4. Benzylamine | 11. N-Ethylaniline |
| 5. α-Phenylethylamine | 12. 2,4-Dimethylaniline |
| 6. N-Methylaniline | 13. N,N-Diethylaniline |
| 7. m-Toluidine | 14. Dibenzylamine |

Ordering Information

ID (mm)	df (µm)	Temp. Limits °C	Part No.
15-Meter			
0.25	0.25	-20 to 280/300	7EG-G006-11
0.32	0.25	-20 to 280/300	7EM-G006-11
0.32	1.00	-20 to 260/280	7EM-G006-22

ID (mm)	df (µm)	Temp. Limits °C	Part No.
30-Meter			
0.25	0.25	-20 to 280/300	7HG-G006-11
0.25	1.00	-20 to 260/280	7HG-G006-22
0.32	0.25	-20 to 280/300	7HM-G006-11
0.32	1.00	-20 to 260/280	7HM-G006-22
0.53	1.00	-20 to 260/280	7HK-G006-22

ID (mm)	df (µm)	Temp. Limits °C	Part No.
60-Meter			
0.25	0.25	-20 to 280/300	7KG-G006-11
0.32	0.25	-20 to 280/300	7KM-G006-11
ZB-1701 Test Mix			
Zebtron	ZB-1701		AG0-5156



If you need a 5 in. cage, simply add a (-B) after the part number, e.g., 7HG-G006-11-B.

*Thicker films (≥ 1.0 µm df) are rated to 260/280 °C (Isothermal/TPGC).



PROTECT YOUR GC COLUMN. TRY Z-GUARD WITH YOUR NEXT ZEBRON ORDER.