



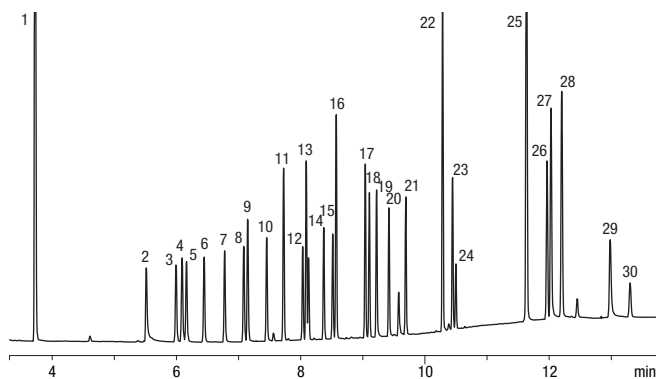
ZB-35 GC Columns

- **Temperature Limits: 50 to 340/360 °C (Isothermal/TPGC)**
- **Intermediate polarity column with temperature limits up to 360 °C - allows high molecular weight analysis**
- **Excellent inertness to minimize analyte adsorption, improve efficiency, and reproducibility**
- **More rugged (longer column life) than other polar phases**
- **Excellent for trace analysis with bleed-sensitive detectors (MS, FID, ECD, NPD)**
- **Equivalent to USP Phase G42**

Applications		
Aroclors	Pesticides	Semi-volatiles
Amines	Pharmaceuticals	Drug of Abuse
EPA Methods 508, 608, 8081, 8141, 8151		Steroids

Alternative to Any 35 %-Phenyl- 65 %-Dimethylpolysiloxane Phase:						
DB-35ms	SPB-35	AT-35	OV-11	SPB-608	Rtx-35MS	HP-35ms
HP-35	MDN-35	007-11	Sup-Herb	BPX608	DB-35	EC-35
Rtx-35	BPX35					

Column Profile



App ID 16010

Common Drug Screen

- Column:** Zebtron ZB-35
- Dimensions:** 30 meter x 0.25 mm x 0.25 µm
- Part No.:** 7HG-G003-11
- Injection:** Split 10:1 @ 225 °C, 1.5 µL
- Carrier Gas:** Helium @ 1.4 mL/min (constant flow)
- Oven Program:** 120 °C for to 180 °C @ 25 °C/min to 200 °C/min @ 6 °C/min to 300 °C/min @ 20 °C/min for 3 min
- Detector:** FID @ 300 °C
- Sample:** All analytes are 25 ppm except nicotine at 100 ppm
- | | |
|--------------------|----------------------|
| 1. Nicotine | 16. Caffeine |
| 2. Ibuprofen | 17. Chlorpheniramine |
| 3. Allobarbitol | 18. Methapyrilene |
| 4. Acetaminophen | 19. Phenobarbitol |
| 5. Aprobarbitol | 20. Procaine |
| 6. Butalbital | 21. Brompheniramine |
| 7. Amobarbitol | 22. Chlorcyclizine |
| 8. Pentobarbitol | 23. Cocaine |
| 9. Phenacetin | 24. Benactyzine |
| 10. Secobarbitol | 25. Codeine |
| 11. Benzphetamine | 26. Diazepam |
| 12. Meprobamate | 27. Morphine |
| 13. Dimenhydrinate | 28. Hydrocodone |
| 14. Hexobarbitol | 29. Oxymorphone |
| 15. Doxylamine | 30. Heroin |

Ordering Information

ID (mm)	df (µm)	Temp. Limits °C	Part No.
15-Meter			
0.25	0.25	50 to 340/360	7EG-G003-11
0.25	0.50	50 to 340/360	7EG-G003-17
0.53	1.00	50 to 340/360	7EK-G003-22

ID (mm)	df (µm)	Temp. Limits °C	Part No.
30-Meter			
0.25	0.25	50 to 340/360	7HG-G003-11
0.25	0.50	50 to 340/360	7HG-G003-17
0.32	0.25	50 to 340/360	7HM-G003-11
0.53	0.50	50 to 340/360	7HK-G003-17
0.53	1.00	50 to 340/360	7HK-G003-22

ID (mm)	df (µm)	Temp. Limits °C	Part No.
60-Meter			
0.25	0.25	50 to 340/360	7KG-G003-11
0.32	0.25	50 to 340/360	7KM-G003-11
Test Mix			
Zebtron	ZB-35		AG0-5156



If you need a 5 in. cage, simply add a (-B) after the part number, e.g., 7HG-G003-11-B.



PROTECT YOUR GC COLUMN. TRY Z-GUARD WITH YOUR NEXT ZEBRON ORDER.