

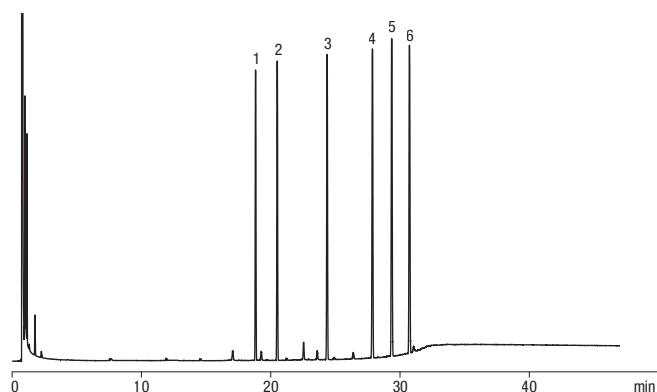
ZB-5 GC Columns

- **Temperature Limits: -60 to 360/370 °C (Isothermal/TPGC)***
- **Versatile low polarity column**
- **Low bleed (MS Certified) especially suited to high sensitivity work using GC/MS**
- **Extremely inert for active compounds such as drugs or pesticides**
- **Resilient to dirty samples - long column life**
- **Great column for unknown samples**
- **Equivalent to USP Phase G27**

Applications		
Alkaloids	FAMEs	Phenols
Dioxins	Halo-hydrocarbons	Residual Solvents
Drugs	PCBs/Aroclors	Semi-volatiles
Essential Oils/Flavors	Pesticides/Herbicides	

Alternative to Any 5 %-Phenyl- 95 %-Dimethylpolysiloxane Phase:						
DB-5	HP-PAS-5	SPB-5	007-5	SE-54	EC-5	Ultra 2
HP-5	MDN-5	OV-5	AT-5	BP5	HP-101	CP-SIL 8 CB
Rbx-5	Equity-5	MDN-5	AT-5	BPX5	HP-5 Trace Analysis	

Column Profile



App ID 14876

Phthalate Esters: EPA Method 606

- Column:** Zebtron ZB-5
- Dimensions:** 30 meter x 0.53 mm x 1.50 µm
- Part No.:** 7HK-G002-28
- Injection:** Split 20:1 @ 300 °C, 1 µL
- Carrier Gas:** Helium @ 12.9 mL/min (constant flow)
- Oven Program:** 40 °C for 6 min to 300 °C @ 10 °C/min for 15 min
- Detector:** FID @ 300 °C
- Sample:**
- | | |
|-------------------------|--------------------------------|
| 1. Dimethyl Phthalate | 4. Butyl Benzyl Phthalate |
| 2. Diethyl Phthalate | 5. Bis(2-ethylhexyl) Phthalate |
| 3. Di-n-butyl Phthalate | 6. Di-n-octyl Phthalate |

Ordering Information

ID (mm)	df (µm)	Temp. Limits °C	Part No.
15-Meter			
0.25	0.10	-60 to 360/370	7EG-G002-02
0.25	0.25	-60 to 360/370	7EG-G002-11
0.25	0.50	-60 to 360/370	7EG-G002-17
0.25	1.00	-60 to 340/360	7EG-G002-22
0.32	0.10	-60 to 360/370	7EM-G002-02
0.32	0.25	-60 to 360/370	7EM-G002-11
0.32	1.00	-60 to 340/360	7EM-G002-22
0.53	0.50	-60 to 360/370	7EK-G002-17
0.53	1.50	-60 to 340/360	7EK-G002-28
0.53	3.00	-60 to 340/360	7EK-G002-36
20-Meter			
0.18	0.18	-60 to 360/370	7FD-G002-08

ID (mm)	df (µm)	Temp. Limits °C	Part No.
30-Meter			
0.25	0.10	-60 to 360/370	7HG-G002-02
0.25	0.25	-60 to 360/370	7HG-G002-11
0.25	0.50	-60 to 360/370	7HG-G002-17
0.25	1.00	-60 to 340/360	7HG-G002-22
0.32	0.10	-60 to 360/370	7HM-G002-02
0.32	0.25	-60 to 360/370	7HM-G002-11
0.32	0.50	-60 to 360/370	7HM-G002-17
0.32	1.00	-60 to 340/360	7HM-G002-22
0.53	0.50	-60 to 360/370	7HK-G002-17
0.53	1.50	-60 to 340/360	7HK-G002-28
0.53	3.00	-60 to 340/360	7HK-G002-36
0.53	5.00	-60 to 340/360	7HK-G002-39

ID (mm)	df (µm)	Temp. Limits °C	Part No.
60-Meter			
0.25	0.10	-60 to 360/370	7KG-G002-02
0.25	0.25	-60 to 360/370	7KG-G002-11
0.25	0.50	-60 to 360/370	7KG-G002-17
0.25	1.00	-60 to 340/360	7KG-G002-22
0.32	0.25	-60 to 360/370	7KM-G002-11
0.32	1.00	-60 to 340/360	7KM-G002-22
0.53	1.50	-60 to 340/360	7KK-G002-28
Test Mix			
Zebtron	ZB-5		AG0-5155



If you need a 5 in. cage, simply add a (-B) after the part number, e.g., 7HG-G002-11-B.

*Thicker films (≥1.0 µm df) are rated to 340/360 °C (Isothermal/TPGC).



PROTECT YOUR GC COLUMN. TRY Z-GUARD WITH YOUR NEXT ZEBRON ORDER.