

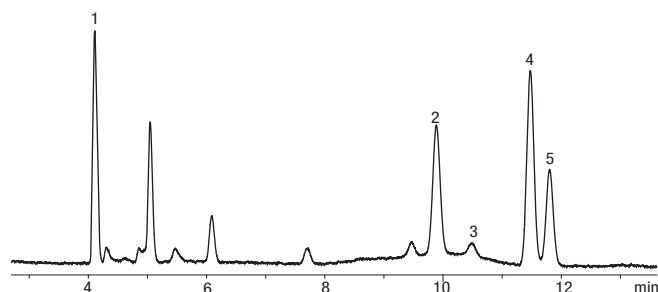
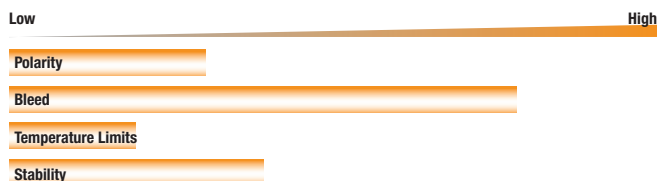
ZB-624 GC Columns

- **Temperature Limits: -20 to 260 °C**
- **Formulated for low bleed**
- **Excellent for US EPA Methods 501.3, 502.2, 503.1, 524.2, 601, 602, 8010, 8015, 8020, 8240, 8260, 8021**
- **Specifically designed for the separation of volatile organic compounds (VOCs)**
- **Increased temperature limit speeds run times and re-equilibration**
- **Widely used phase to separate volatile organic flavor and fragrance additives and residual solvents in industrial or pharmaceutical products (OVIs)**
- **Equivalent to USP Phase G43**

Applications	
Volatile Organic Compounds (VOCs)	
EPA Methods 524, 624, 8260	Residual Solvents

Alternative to Any 6 %-Cyanopropylphenyl- 94 %-Dimethylpolysiloxane Phase:						
DB-624	AT-624	DB-VRX	Rtx-1301	CP-1301	SPB-624	Rtx-624
BP624	007-502	HP-VOC	007-624	Rtx-VMS	DB-1301	SPB-1301
CP-Select 624 CB						

Column Profile



App ID 16348

USP 467 Procedure A Class 1

- Column:** Zebtron ZB-624
- Dimensions:** 30 meter x 0.32 mm x 1.80 μm
- Part No.:** 7HM-G005-31
- Injection:** Split 5:1 @ 140 °C, 1 mL
- Carrier Gas:** Helium @ 35 cm/sec (constant flow)
- Oven Program:** 40 °C for 20 min to 240 °C @ 10 °C/min for 20 min
- Detector:** FID @ 250 °C
- Sample:**
- 1,1-Dichloroethane
 - 1,1,1-Trichloroethane
 - Carbon tetrachloride
 - Benzene
 - 1,2-Dichloroethane

Ordering Information

ID (mm)	df (μm)	Temp. Limits °C	Part No.
20-Meter			
0.18	1.00	-20 to 260	7FD-G005-22
30-Meter			
0.25	1.40	-20 to 260	7HG-G005-27
0.32	1.80	-20 to 260	7HM-G005-31
0.53	3.00	-20 to 260	7HK-G005-36

ID (mm)	df (μm)	Temp. Limits °C	Part No.
60-Meter			
0.25	1.40	-20 to 260	7KG-G005-27
0.32	1.80	-20 to 260	7KM-G005-31
0.53	3.00	-20 to 260	7KK-G005-36

ID (mm)	df (μm)	Temp. Limits °C	Part No.
75-Meter			
0.53	3.00	-20 to 260	7LK-G005-36
105-Meter			
0.53	3.00	-20 to 260	7NK-G005-36
Test Mix			
Zebtron	ZB-624		AG0-5159



If you need a 5 in. cage, simply add a (-B) after the part number, e.g., 7HG-G005-11-B.



PROTECT YOUR GC COLUMN. TRY Z-GUARD WITH YOUR NEXT ZEBRON ORDER.