

**new**

# ZB-XLB GC Columns



- **Temperature Limits: 30 to 340/360 °C (Isothermal/TPGC)\***
- **Unique low polarity si-arylene column**
- **Engineered specifically for use with bleed sensitive detectors such as MS**
- **Provides alternate selectivity to standard 5-type phases**
- **Often used for confirmation of pesticides, PCBs, or other environmental samples**
- **Good tool for sample screening to identify unknown contaminants**

### Applications

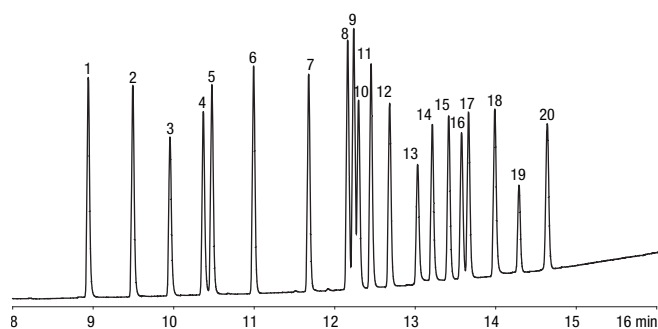
Polychlorinated Biphenyls (PCBs)	Pesticides	Herbicides
----------------------------------	------------	------------

### Similar\* to:

Rtx-CLPesticides	DB-XLB
Stx-CLPesticides	Rtx-XLB

\* Not an exact equivalent, selectivity might be different.

### Column Profile



App ID 16414

### Chlorinated Pesticides: EPA Method 8081A

- Column:** Zebron ZB-XLB  
**Dimensions:** 30 meters x 0.25 mm x 0.25 µm  
**Part No.:** 7HG-G019-11  
**Injection:** Split 111:1 @ 250 °C, 1.5 µL  
**Carrier Gas:** Helium @ 0.9 mL/min (constant flow)  
**Oven Program:** 110 °C to 320 °C at 15 °C and hold until last peak elutes  
**Detector:** ECD @ 350 °C
- Sample:**
- |                       |                        |
|-----------------------|------------------------|
| 1. α-BHC              | 11. 4,4'-DDE           |
| 2. γ-BHC              | 12. Dieldrin           |
| 3. β-BHC              | 13. Endrin             |
| 4. δ-BHC              | 14. 4,4'-DDD           |
| 5. Heptachlor         | 15. Endosulfan II      |
| 6. Aldrin             | 16. Endrin aldehyde    |
| 7. Heptachlor epoxide | 17. 4,4'-DDT           |
| 8. γ-Chlordane        | 18. Endosulfan sulfate |
| 9. α-Chlordane        | 19. Methoxychlor       |
| 10. Endosulfan I      | 20. Endrin ketone      |

### Ordering Information

ID (mm)	df (µm)	Temp. Limits °C	Part No.
<b>15-Meter</b>			
0.25	0.25	30 to 340/360	7EG-G019-11
<b>20-Meter</b>			
0.18	0.18	30 to 340/360	7FD-G019-08
<b>30-Meter</b>			
0.25	0.25	30 to 340/360	7HG-G019-11
0.25	0.50	30 to 340/360	7HG-G019-17
0.32	0.25	30 to 340/360	7HM-G019-11
0.32	0.50	30 to 340/360	7HM-G019-17
0.53	1.50	30 to 320/340	7HK-G019-28
<b>60-Meter</b>			
0.25	0.25	30 to 340/360	7KG-G019-11
<b>Test Mix</b>			
Zebron	ZB-XLB		AG0-7578



If you need a 5 in. cage, simply add a (-B) after the part number, e.g., 7HG-G019-11-B.

\*Thicker films (≥ 1.0 µm df) are rated to 320/340 °C (Isothermal/TPGC).



**PROTECT YOUR GC COLUMN. TRY Z-GUARD WITH YOUR NEXT ZEBRON ORDER.**